

Wafer Overlay Inspection System

Wafer misalignment inspection system

Seiwa Original Optics (DSI) series on board .

“DSI” Series



Features

- Rich experience in power device, CMOS , Crystal Tuner and ink jet printer head markets .
- Inspect and measure pattern of wafer from top through backside without destruction .
- Seiwa Original Optical engine DSI series delivers high precision measurement with repeatability of $3\sigma \leq 0.2 \sim 0.02\mu\text{m}$

~Custom system also available ~

FOR SEMICONDUCTOR

Overlay Inspection System

INSPECTION SYSTEM

【Overview】

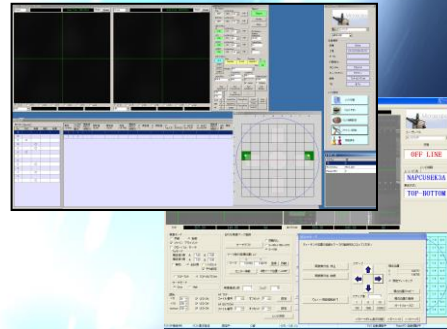
Inspects and Measures two-sided patten and wafer overlay misalignment .
 Inspects pattern at top/back side , top/top side and bonded wafer boundary
 without destruction. High Resolution option is available by switching the Optical
 Engine .

【Features】

High Resolution
 Seiwa Original
 Optical Engine

High Precision
 Top – back side inspection
 Repeatability of measurement
 With Mag 10x : $3\sigma \leq 0.2$
 With Mag 50x : $3\sigma \leq 0.02\mu m$
 TIS Mode 0° /180° Orientation test

Fast Processing
 Hi throughput
 100/1H
 ※5pts inspection



【Specification】

Wafer size : 2、4、6、8、12 inches、 ϕ 450mm
 Option : TAIKO wafer、Thinning wafer、Irregular-shaped wafers
 Handling : Robot (Cassette or from Load port station)
 ※Have use case of Backside non-contact handling robot
 Cleanliness : ISO14644-1 Class3~ FFU (ULPA) on board

Seiwa Original Optical engine (DSI) Series
 Alignment Optics : 3x、10x
 Lens Option : Selectable per requirement (10x~50x)

Option :
 Measurement for Line width and thickness . Wafer rotation , wafer sorter .

株式会社 清和光学製作所

【お問合せ先】E-mail: sales@seiwaopt.co.jp

本社	: 〒164-0013 東京都中野区弥生町4-12-17	TEL:03-3383-6301/FAX:03-3383-6304
上野原事業所	: 〒409-0112 山梨県上野原市上野原8154-41	TEL:0554-63-5211/FAX:0554-63-5213
関西事業所	: 〒573-0128 大阪府枚方市津田山手2-17-10	TEL:072-808-0550/FAX:072-808-0650
長野事業所	: 〒399-0737 長野県塩尻市大門八番町9-3	TEL:0263-51-0710/FAX:0263-51-0718
福岡営業所	: 〒813-0042 福岡県福岡市東区舞松原1-12-10	TEL:092-410-8616/FAX:092-410-8617

<http://www.seiwaopt.co.jp>

