

Fully Automated Review System

Semiconductor Auto Review System

Seiwa Original Review Engine SRV Series on Board

“SRV” Series



Features

- Review the defect of semiconductor integrated circuit detected by AVI/AOI at front end processing
- Judge defects from over detection and increase the yield .
- Seiwa Original high resolution optical engine onboard with Seiwa designed chassis to attain high throughput with high precision inspection .

~Customized system is available ~

FOR SEMICONDUCTOR

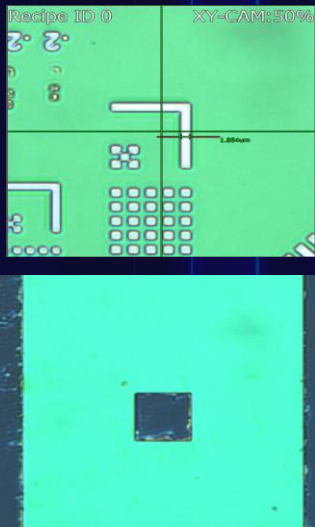
- “Flash” detection SEMI evolution-

INSPECTION SYSTEM

【Overview】

Review system integrated with high speed Auto Focus shares defect coordinate from front end processing. Upon Review system arriving at defect location , high resolution image is automatically captured to store at ADC .

【Features】



High Resolution
Pixel size 3.45 μ m
5M pixel camera

High Precision
Review repeatability
 $3\sigma \leq 20 \mu$ m

Fast Processing
High through put
200 images /sec



【Specification】

- Wafer size : 8 inch /12 inch
- Work Condition : Dicing ring or Frame ring
- Wafer handling : Robot
(Cassette or from Load Port Station)
- Motion Speed : Max 1000mm/sec
Acceleration / Deceleration 0.1sec
※2X faster (for 300mm case)
※Anti vibration countermeasure applied
- Cleanliness : ISO14644-1 Class3~ integrated FFU (ULPA)

SRV series Seiwa original review Engine (For Review)

Camera : 5M pixel

Lenses : 2.5x、 10x、 20x、 50x、 100x

株式会社 清和光学製作所

【お問合せ先】E-mail: sales@seiwaopt.co.jp

- | | | |
|--------|--------------------------------|-----------------------------------|
| 本社 | : 〒164-0013 東京都中野区弥生町4-12-17 | TEL:03-3383-6301/FAX:03-3383-6304 |
| 上野原事業所 | : 〒409-0112 山梨県上野原市上野原8154-41 | TEL:0554-63-5211/FAX:0554-63-5213 |
| 関西事業所 | : 〒573-0128 大阪府枚方市津田山手2-17-10 | TEL:072-808-0550/FAX:072-808-0650 |
| 長野事業所 | : 〒399-0737 長野県塩尻市大門八番町9-3 | TEL:0263-51-0710/FAX:0263-51-0718 |
| 福岡営業所 | : 〒813-0042 福岡県福岡市東区舞松原1-12-10 | TEL:092-410-8616/FAX:092-410-8617 |

<http://www.seiwaopt.co.jp>

